

## SIGNIFICANT SIGS

### Phi Phi Chapter Recipients of The Significant Sig Award

(Honoring distinguished achievement in their professional career)

Roger H. Ferger '16\*  
William B. McIntosh '16\*  
John A. Mayer '32\*  
James W. Alsdorf '35\*  
Davis G. Durham, M.D. '36  
John M. Eckman '43\*  
James F. Lunn '44\*  
Jack W. McCloskey '46  
Cornelius E. Smyth '46  
J. Joseph Tuohy '49  
Richard O. Kress '50  
H. Samuel Greenawalt '51  
Raymond H. Welsh '53  
Edmund R. Auer '54  
The Hon. James C. Cacharis '55  
Murray K. McComas '58  
Sesto E. Vecchi '58  
Charles C. Butt '59  
Jon M. Huntsman '59  
Alvin V. Shoemaker '60  
Robert A. Gleason '61  
Paul K. Kelly '62  
L. John Clark '63  
John H. Goldsmith '63  
Jacques N. Gordon '78  
Marc F. McMorris '90  
Mark T. DeRosa '97  
Gerald D. Knorr '82

(\* deceased)

## MAKE A GIFT

### Alumni Contributions Make Quaker Sig Possible

Your contributions make a difference! If your name is listed on page 4, thank you for your contribution. If not, you can help us help you stay connected by making a contribution to the annual fund today!

#### Making a Gift is Easy!

There are three ways to support the annual fund:

- By calling 800.975.6699
- Online at [www.phiphi-sigmachi.org](http://www.phiphi-sigmachi.org)
- By mailing a check payable to "Phi Phi of Philadelphia" to:  
Sigma Chi  
University of Pennsylvania  
PO Box 7007  
Albert Lea, MN 56007-8007

Phi Phi Chapter • Sigma Chi Fraternity • University of Pennsylvania



## SIGNIFICANT SIGS

### "Significant" Recognition Bestowed on Phi Phi Alumni Gerald D. Knorr '82, Becomes the 28th Phi Phi Alumni Brother to be Honored as a Significant Sig

Phi Phi brother, **Gerald D. Knorr '82**, has been selected to become part of a very prestigious group: the Significant Sigs. The Significant Sig Award is the Fraternity's highest recognition of achievement in a brother's professional career and civic engagements. It recognizes "those alumni members whose achievements in their fields of endeavor have brought new luster and prestige to the name of Sigma Chi."

The Sigma Chi Fraternity has recognized nearly 1,500 brothers since the award's inception at the 1935 Grand Chapter. Jerry is joined by 37 additional distinguished Sigma Chi's in the Class of 2010 Awardees and becomes the 28th Phi Phi Chapter alumni brother to be so honored.

*"The Significant Sig Award is the Fraternity's highest recognition of achievement in a brother's professional career and civic engagements."*

Throughout his career, Jerry has achieved many accomplishments. Serving as Managing Director at Bank of America – Merrill Lynch since 1994, his primary responsibility is raising capital for some of the nation's largest not-for-profit academic medical centers including: Johns Hopkins Health System, Vanderbilt Health System and the University of Pennsylvania Health System. Over this period, he has served as a Senior Banker on over \$20B of healthcare financings. His commitment to health care finance has enabled a staggering amount of new research and clinical care facilities to be constructed nationwide, fostering

an immeasurable level of innovative discovery and care delivery.



Serving as Vice President and Treasurer of the Phi Phi chapter's alumni House Corporation for over 25 years, Jerry led a \$400,000 capital campaign in the mid-80s and is overseeing our current campaign to accomplish our historic chapter house restoration. Our house remains among the most financially sound on campus as we continue to operate without any University debt. His advice on all financial matters regarding the chapter has been critical to our bottom line and his moral compass regarding other board issues is always rock solid.

Jerry has shown his commitment to the University through his leadership on the board of the Penn Club of New York. As past Vice President and Treasurer and now as President, he oversees the operations of the Club's 6000 members, 150 employees and a \$12M annual operation budget. In addition, he and his wife, Monica, generously funded an Endowed Scholarship to support an undergraduate student in the Huntsman Program in International Studies at Penn.

As an Eagle Scout and Vigil Honor member of the Order of the Arrow, Jerry remains active in the Boy Scouts of America as an Assistant Scoutmaster and serves on the Advisory Board for his local Council in Greenwich CT.

A presentation ceremony will be held for Jerry as part of Penn's Homecoming celebration this coming fall. Stay tuned for details of the event to be held at the Phi Phi Chapter House at 3809 Locust Walk.

Congratulations Jerry!

### New Pledge Class Yields High Expectations for Chapter Philanthropy Event Raises \$5,000

By Jesse Taylor, Phi Phi '11

The first three months of the spring semester have been quite eventful at the Phi Phi house. We began 2010 with a heightened dedication to identifying and attracting men of quality character, and we were able to recruit a class

of 20 very impressive new-member candidates. After a rigorous pledge process, these new brothers were initiated on Sunday, March 28. We are especially proud of this class and are excited to see them take our chapter to even greater heights.

During the first week of April, the chapter held its annual Derby Days fund raising event and was able to raise \$5,000 which will be donated to the Huntsman Cancer Institute.

Between our new members and our dedication to staying involved on campus and within the community, we are gearing up for a great finish to the school year and looking ahead to next semester with high expectations.



Brothers attended the Mid-Atlantic Provincial Conference hosted at Penn on April 4, 2010

### Welcome Spring 2010 Pledge Class!

**Dan Greenberg** - Bala Cynwyd, PA  
**Keith Rush** - Short Hills, NJ  
**Jesse Ross** - Warren, NJ  
**Eric Windsor** - Larchmont, NY  
**Mitch Stein** - Ft. Wayne, IN (father is a Sig from Wabash College)  
**Mike Bergstrom** - St. Louis Park, MN  
**John Beasley** - Virginia Beach, VA  
**Matthew Rybak** - Bridgewater, NJ  
**Vasu Prathipati** - San Diego, CA  
**Evan Reynolds** - Hermon, ME  
**Brad Present** - Philadelphia, PA  
**Blake Winston** - Dallas, TX  
**Kevin Gramza** - Williamsville, NY  
**Michael Kozac** - Hershey, PA  
**Lucas Andreika** - Weston, CT  
**Jake Hennessy** - Birdsboro, PA  
**Andrew Weinstock** - Short Hills, NJ  
**Charles Walker** - Baltimore, MD  
**Zack King** (Pledge Class President) - Philadelphia, PA  
**Kirk Hayes** - Dallas, TX

### New Officers Demonstrate Dedication to the Chapter

Officer elections took place this past fall and the following brothers took office on November 1, 2009. They should be recognized for their dedication to our chapter:

Consul

**Jesse Taylor** - Junior, Atlanta, GA

Pro-Consul

**Tim Donnally** - Junior, Summit, NJ

Quastor

**Scott Israelite** - Junior, Philadelphia, PA

Annotator

**Arjun Pai** - Sophomore, New York, NY  
(son of Dhan Pai, Phi Phi '83)

Risk Manager

**Will Davis** - Junior, Atlanta, GA

Magister

**David Poss** - Senior, Newnan, GA

Social Chairman

**Jeff Westcott** - Sophomore, Darien, CT  
**Mason Rippey** - Sophomore, Portland, OR

Rush Chairman

**Tom Jackson** - Senior, Atlanta, GA  
**Matt Brennan** - Senior, Long Island, NY  
**Jon Kelly** - Junior, McLean, VA  
**Alec Smith** - Sophomore, Chicago, IL

## FROM THE ARCHIVES

Love old photos? So do we. That's why we need your help to preserve the best moments from our history that have been captured on film.

Send the best photos from your era to our editors for possible publication. You can email them to [content@affinityconnection.com](mailto:content@affinityconnection.com) or upload them online at [www.phiphi-sigmachi.org](http://www.phiphi-sigmachi.org).

*In this photo: The chapter in 1960. (From the Record)*



## ALUMNI UPDATES

### '60s

#### Bill Sadlier '62

(540 W 63rd Street, Indianapolis, IN 46260; itsads@comcast.net) Hey, Class of '62! I'm planning on attending our 50th reunion in 2012 and hope many of our fellow Sigs will be there. Let me know at my e-mail address (itsads@comcast.net) In Hoc, Bill Sadlier

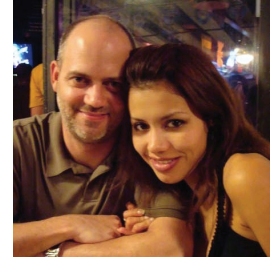
### '90s

#### Mark Carroll '93

(675 Ridgedale Ave., Birmingham, MI 48009; mcarroll@superiorfund.com) My wife, Amy, and I welcomed our daughter Maria Katherine "Mia" to the world on January 31. Mia joins older brother Charlie (8) and sisters Ashley (6) and Heidi (3). We live in Birmingham, MI and I am the Managing Partner of Superior Capital Partners, a lower middle market private equity fund headquartered in Detroit.

#### Daniel R. LaPace '95

(3110 Thomas Ave Apt 325, Dallas, TX 75204; dlapace@thehiveinc.com) I am getting married to Bianca Perez on May 28 in Cancun, Mexico. It will be a sunset wedding on the beach at the Sun Palace Resort. All Sigs are welcome to attend!



## MEMORIES OF SIGMA CHI

### David Fleshman '61 Reflects on His Sigma Chi Initiation

The following is one of many vivid memories I have of my Sigma Chi days at Penn.

After an exhausting night with no sleep towards the end of my initiation into Sigma Chi, I was to be interviewed by a member from "Sigma Chi International." I was blindfolded and led into the library to face the anonymous interviewer (whom I learned afterwards was Phi Phi alumnus Stu Fabrega '58). I could sense the presence of several brothers during the interview.

I did quite well until I was asked to surrender a set of instructions I had received the preceding night that I was to return only

to the person who gave them to me. Of course I did not have them as, in my exhausted state, I had given them up to the first person who requested them, my Magister.

The interview concluded with the interviewer stating, "Considering the fact that David Fleshman has failed to follow explicit instructions, I must recommend that he not be accepted into the Phi Phi Chapter of Sigma Chi Fraternity." I was devastated. I was then escorted upstairs.

Even though exhausted, I was unable to sleep and I began to weep uncontrollably. A few minutes later, Jon, who was my Big

Brother, came in and sat down beside the bed, place his hand on my left shoulder, gave me an affectionate pat and said, "David, you'll make a good Sig."

I hope that I have.

*While our local chapter and National Fraternity alike are committed to eliminating hazing from our campuses across the nation, we wanted to share this short story from an alumni who describes his everlasting fondness for the brotherhood.*

## ALUMNI REUNION

### Once a Sigma Chi, Always a Sigma Chi

The 40<sup>th</sup> Penn Reunion, held in 2009, gave three Phi Phi brothers the opportunity to catch up and remember their Sigma Chi days. Pictured left to right are **Bill Schmidt**, **Vince Mannino** and **George Morriss**. George and Bill get together occasionally with the New York-area brothers, usually including **Tom Farrell**, **Charlie O'Neill**, **Paul Hiller** and **John Dickerson**. Recently, **Maury Nunes** came up from MD to join in the 60s-era gathering.



## 2009-10 HONOR ROLL OF DONORS

***This Honor Roll reflects gifts made to the Annual Fund since September 1, 2009.  
Thank you to all of our donors for their ongoing generosity.***

Lester R. Giegerich 1940  
Edward J. Murtaugh 1942  
Cornelius E. Smyth 1946  
Porter R. Taylor Jr. 1949  
J. Joseph Tuohy 1949  
David E. Brewer 1950  
George S. Bowden 1953  
Raymond H. Welsh 1953  
John C. Hoffsommer 1954  
Fergus M. Sloan Jr. 1954  
Thomas W. Hoff 1957  
H S. Kirkpatrick 1957  
Murray K. McComas 1958  
Sesto E. Vecchi 1958  
R. Timmis Ware 1958  
David F. Riker 1960  
David W. Bassett 1961  
Robert A. Gleason Jr. 1961  
John M. Holliday 1961  
Fred A. Carpenter 1962

Harry H. Rowland Jr. 1962  
William G. Sadlier 1962  
Frank B. Schmidt 1962  
Lawrence R. Van Deusen 1962  
Luther Johnson Clark 1963  
Bernard G. McGarry Jr. 1963  
Harlowe R. Prindle 1964  
A. Parker Sharron 1964  
John S. Sawyer 1965  
Willis S. Hesselroth 1966  
Thomas P. Farrell 1968  
George W. Morriss 1969  
Charles K. O'Neill 1969  
Morris A Nunes 1970  
J. Kevin Dolan 1973  
Robert M. Hellauer Jr. 1973  
Vincent A. Kolber 1974  
Mitchell Bland 1978  
Jacques N. Gordon 1978  
Robert S. Haws 1979

John M. Roth 1980  
Ronald M. Caronia, MD 1981  
Gerald D. Knorr 1982  
Ronald I. Woodmansee 1982  
Dhananjay M. Pai 1983  
James R. Goodfield 1984  
Brian J. Scanlan 1984  
Walter S. Hulse III 1986  
Jeffrey D. Bukowski 1987  
Daniel N. Kane 1987  
Steven A. Reny 1987  
Joseph S. Sheetz 1989  
George J. Vassar 1990  
Todd W. Bauer 1991  
David C. Istock 1994  
Donald Anthony McComas 1997  
Mina A. Mishrikey 2000  
Matthew D. Scattarella 2003

*Reflects gifts as of May 4*

*Phi Phi adds to its collection of Significant Sig plaques hanging in the Founders Stair hall.*



***Distinguished Alumni becomes 28th Phi Phi to be honored as a Significant Sig. Details inside...***

424-062 SN

Address Service Requested

Albert Lea, MN 56007-8007

P.O. Box 7007

Alumni Relations Processing Center

**SIGMA CHI FRATERNITY**  
**UNIVERSITY OF PENNSYLVANIA**



PRESORTED  
FIRST CLASS MAIL  
U.S. POSTAGE  
PAID  
State College, Pa.  
Permit No. 2